

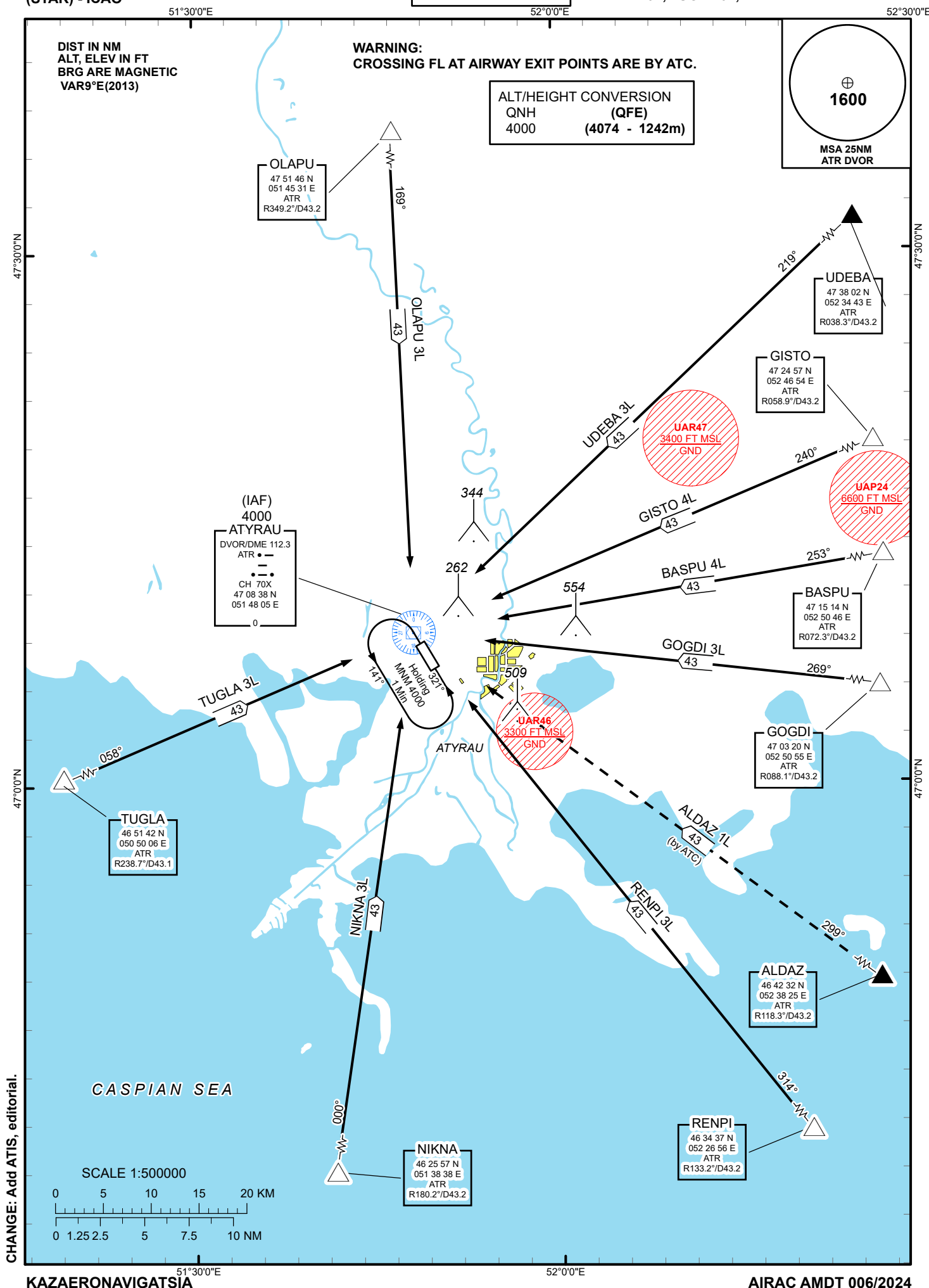
STANDARD ARRIVAL  
CHART - INSTRUMENT  
(STAR) - ICAO

TRANSITION ALTITUDE  
10000 ft

ATYRAU TOWER 118.1  
ATYRAU ATIS (EN) 127.4  
ATYRAU ATIS (RU) 126.6

OLAPU 3L, UDEBA 3L, GISTO 4L,  
BASPU 4L, GOGDI 3L, RENPI 3L,  
NIKNA 3L, TUGLA 3L, ALDAZ 1L.

ATYRAU  
RWY 14



<b>Standard Arrival Routes – Instrument (STAR) ATYRAU RWY 14</b>
<b>OLAPU 3L</b> After crossing OLAPU (R349.2°, D43.2 ATR) proceed on track 169° to ATR. Cross ATR DVOR at 4000.
<b>UDEBA 3L</b> After crossing UDEBA (R038.3°, D43.2 ATR) proceed on track 219° to ATR. Cross ATR DVOR at 4000.
<b>GISTO 4L</b> After crossing GISTO (R058.9°, D43.2 ATR) proceed on track 240° to ATR. Cross ATR DVOR at 4000.
<b>BASPU 4L</b> After crossing BASPU (R072.3°, D43.2 ATR) proceed on track 253° to ATR. Cross ATR DVOR at 4000.
<b>GOGDI 3L</b> After crossing GOGDI (R088.1°, D43.2 ATR) proceed on track 269° to ATR. Cross ATR DVOR at 4000.
<b>RENPI 3L</b> After crossing RENPI (R133.2°, D43.2 ATR) proceed on track 314° to ATR. Cross ATR DVOR at 4000.
<b>NIKNA 3L</b> After crossing NIKNA (R180.2°, D43.2 ATR) proceed on track 000° to ATR. Cross ATR DVOR at 4000.
<b>TUGLA 3L</b> After crossing TUGLA (R238.7°, D43.1 ATR) proceed on track 058° to ATR. Cross ATR DVOR at 4000.
<b>ALDAZ 1L</b> After crossing ALDAZ (R118.3°, D43.2 ATR) proceed on track 299° to ATR. Cross ATR DVOR at 4000.